

Nevada Shared Stewardship

2022 Accomplishments

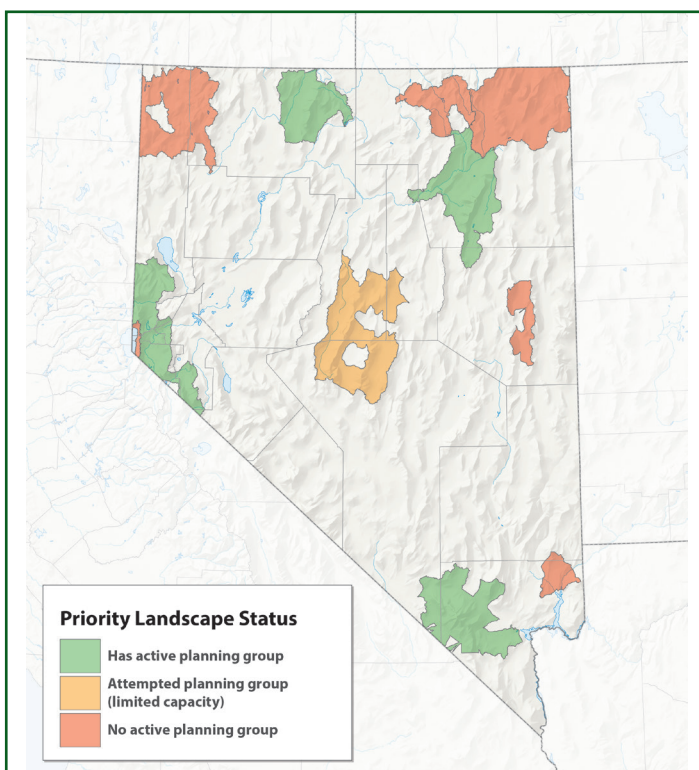


Background

In 2019, the State of Nevada and multiple federal agencies signed the Nevada Shared Stewardship Agreement to establish a framework to reduce wildfire threats across high-risk forests and rangelands (priority landscapes) throughout Nevada.

This five-year agreement provides a model for multi-agency collaboration to increase the pace and scale of critical landscape restoration work by sharing resources, equipment, labor, and expertise across state, federal, and private lands.

Priority Landscape Status



Goals

1. Identify priority landscapes where work will occur
2. Improve data sharing and create interagency planning groups for each individual landscape
3. Create comprehensive statewide strategic and landscape-specific 5-year plans of work
4. Increase annual acres treated across jurisdictions by 50 percent by 2025

Since 2019, Shared Stewardship partners have successfully completed many of these goals to ensure a more fire-resistant and resilient Nevada. Together, multi-agency partners have identified 13 high-risk landscapes to carry out critical conservation work, such as removing dry grasses and dense vegetation, targeted grazing, and building fuel breaks. Notably, Nevada recently received \$57 million from the US Forest Service to restore high-risk landscapes across the Sierra and Elko fronts, and accomplish mutual goals.

Treatment Types and Acreage

Priority Landscape	Number of Treatments	Acres Treated
Basin and Range	16	205
Elko-Spring Creek-Lamoille-South Rubies	36	20,526
Paradise	11	28,577
Sierra Front-Carson-Walker	56	8,076
Spring Mountains-Pahrump	52	455
Totals	171	57,840

Progress in 2022

Acres Treated and Treatment Types

In 2022, numerous multi-agency planning groups treated 57,840 acres across 171 high-risk areas. This represents approximately a 350% increase compared to 2021.

Acres Treated



Within these landscapes, agency planning groups and a variety of stakeholders implemented the following projects to restore natural ecosystems and habitats, while helping to prevent catastrophic wildfire.

Treatment Types

Treatment	Acreage	
	2021	2022
Broadcast burning	-	76
Fuel Breaks/Green Stripping	1,343	34,469
Seeding/Planting/Rx Fire	20	2,181
Targeted Grazing	-	8,205
Thinning/Piling/Burning	1,005	1,639
Weed Control/Management	10,560	11,270
Total Acreage Treated	12,927	57,840



Learn more about Shared Stewardship in Nevada.

Collaboration

Planning groups and stakeholder collaboration grew significantly last year, resulting in plans and implemented projects with shared equipment, funding, labor and other resources.

Shared Stewardship partners consist of federal agencies (4), state agencies (7), local governments (14), non-profit organizations (5), tribes, private companies, contractors, and private landowners that were involved in accomplishing the activities reported for 2022. In addition to creating healthy landscapes, a significant amount of public outreach and coordination has contributed to the increased awareness of the public's role and supportive actions in ecosystem restoration and wildfire management. Through a combination of traditional and new media, along with in-person and virtual outreach events, Shared Stewardship partners engaged more than 50,000 Nevadans in fire prevention education in 2022.

Next Steps

1. Complete 5-year programs of work for all landscapes that have active planning groups and communicate treatment support needs to the Executive Committee.
2. Coordinate with landscape planning groups to apply Bipartisan Infrastructure Law and Inflation Reduction Act funding to shared priorities.
3. Continue working to establish a formal landscape planning group for the Basin and Range Priority Landscapes with required capacity.
4. Seek additional opportunities and resources to establish planning groups in landscapes that lack them.
5. Establish a strategic communication and outreach plan to publicize accomplishments, increase awareness, and promote cooperator and public participation in shared stewardship efforts.

