



# Red House Fuel Reduction

## Partners and Collaborators:

United States Forest Service

Lake Tahoe Nevada State Park

Nevada Division of Forestry

## Acres to be Conserved or Treated:

10-15 acres of forest

## Communities & Residents to be Affected or Protected:

Small impacts to park users

## Watershed(s):

Franktown Creek watershed

Serves Carson City and Virginia City

## Project Purpose

This project will improve forest resiliency on at least 10 acres and create enhanced conditions to better protect life and property from catastrophic wildfire as well as maintain sustainable water supplies for municipal, agricultural, and wildlife use.

## Project Treatments

Hazardous fuel reduction will be implemented along the uphill side of the Hobart Road West of Red House using hand crews implemented by Nevada Division of Forestry during the summer months in 2019 and 2020. The results will be a reduction in overstocked trees and heavy dead ground fuels.

## Anticipated Impacts & Outcomes

Treatment implementation may cause temporary, short-term impacts to residents in these ways:

- Short-term, congestion and timber felling operations in the local vicinity along the road. This may impact mountain biking and hiking. **PARK USERS SHOULD EXERCISE CAUTION IN THIS AREA**
- Long-term anticipated outcomes include improved resiliency from wildfire to the remaining trees, historic buildings, and a portion of the watershed

## Project Details

Project Timeline	Start to	End	Priority Landscape(s)
Implementation	9/2019	9/20	Funding and treatments were targeted for this area because it is a priority landscape in the Nevada Natural Resources Action Plan
Monitoring	ongoing		( <a href="http://www.stateforesters.org/forest-action-plans/nevada">http://www.stateforesters.org/forest-action-plans/nevada</a> ).

### Threats and Risks to the Area

Wildfire hazards exist this area. The Little Valley wildfire occurred in this area in the mid-1980s. Wildfire can damage this valuable watershed impacting the residents and businesses of Washoe valley, Carson and Virginia Cities.

### National and Nevada's Cohesive Strategy

This project is part of the strategy because it allows federal, state and local agencies to be more effective and efficient at responding to and controlling wildfires, maintaining resilient landscapes, and creating fire-adapted communities.

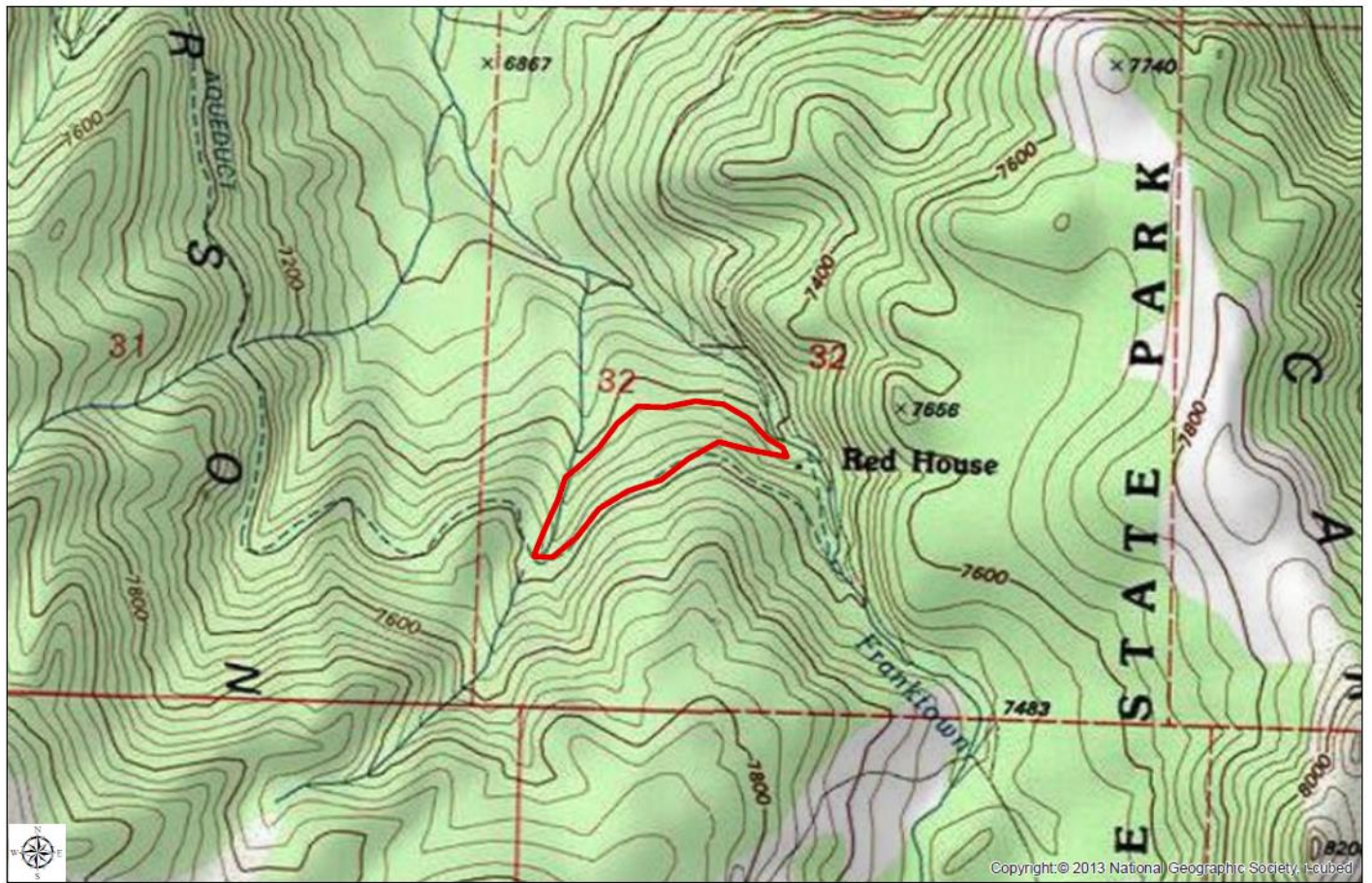
### Funding Source(s)

- Nevada Division of Forestry
- US Forest Service – State and Private Forestry
- [others including in-kind and match]



For more information contact Chanse Hunwardsen at 775-430-0106 or [chunwardsen@forestry.nv.gov](mailto:chunwardsen@forestry.nv.gov)






Copyright © 2013 National Geographic Society. T-cubed

Prepared By:



 Fuel Reduction Area

Scale:

1:12,000

*If the line below does not measure one inch in length, then the scale of this drawing has been altered.*

Design	CLF	10/18/16
Drawn	CLF	10/18/16
Edited	ABC	MM/DD/YY
Reviewed	ABC	MM/DD/YY
Approved	ABC	MM/DD/YY

Title:

**Red House  
Fuel Reduction  
Topography**

Figure Description:

Fuel Reduction Project

Figure Number:

FIGURE 1

Revision

**A**

File Name:

RedHouseFR\_8x11L

Document Path: \\ndfw\Shared\Fire\_Protection\Fuels Projects\Red\_House\RedHouseFR\_8x11L.mxd